

When does the Forward Exam take place?

The Forward Exam will be given in schools between March 19 and May 4, 2018. Schools are permitted to select their own testing dates within this window.

What type of scores will be provided?

The Forward Exam is a summative assessment which provides information about what students know and can do in relation to the Wisconsin Academic Standards. Students receive a score based on their performance in each content area. Each score will fall in one of four levels:

- **Advanced** – Student demonstrates **thorough** understanding of and ability to apply the knowledge and skills for their grade level that are associated with college content-readiness.
- **Proficient** – Student demonstrates **adequate** understanding of and ability to apply the knowledge and skills for their grade level that are associated with college content-readiness.
- **Basic** – Student demonstrates **partial** understanding of and ability to apply the knowledge and skills for their grade level that are associated with college content-readiness.
- **Below Basic** – Student demonstrates **minimal** understanding of and ability to apply the knowledge and skills for their grade level that are associated with college content-readiness.

Where can I find sample or practice test questions?

An Online Tools Training (OTT) is available for students at <http://dpi.wi.gov/assessment/forward/sample-items>. The OTT is intended to give students the opportunity to practice with the tools available on the Forward Exam, as well as allow them to familiarize themselves with the testing platform. It also gives students a chance to work with the different question types they will encounter on the exam. The OTT is not scored, nor is it intended to provide practice on test content.

For more information contact the Office of Student Assessment at osamail@dpi.wi.gov



dpi.wi.gov/assessment/forward

September 2017

The Wisconsin Department of Public Instruction does not discriminate on the basis of sex, race, color, religion, creed, age, national origin, ancestry, pregnancy, marital status or parental status, sexual orientation, or disability.

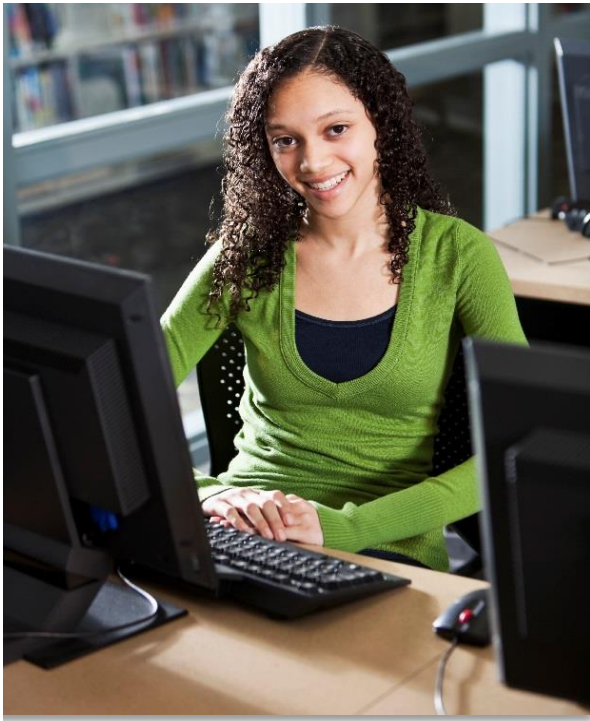


Wisconsin Forward Exam

Information for Families 2017-18



Wisconsin Department of Public Instruction



What is the Wisconsin Forward Exam?

The Wisconsin Forward Exam is designed to gauge how well students are doing in relation to the Wisconsin Academic Standards. These standards outline what students should know and be able to do in order to be college and career ready. The Forward Exam is administered online in the spring of each school year at:

- grades 3-8 in English language arts (ELA) and mathematics,
- grades 4 and 8 in science and,
- grades 4, 8, and 10 in social studies.

The Forward Exam includes several question types:

- **Multiple-Choice (MC)**
Question that has four answer choices, including three distractors and one correct answer.
- **Enhanced Selected Response (ESR)**
Question which may contain combinations of MC, short-answer, and technology-enhanced.
- **Evidence-Based Selected Response (EBSR)**
Question which has two parts. The student answers Part A, then provides evidence in Part B to support answer in Part A.
- **Text-Dependent Analysis (TDA)**
Question used on the ELA test. The TDA is a text-based analysis, based on a passage that read by the student during the assessment. Students must draw on basic writing skills while inferring and synthesizing information from the passage in order to develop a comprehensive, holistic essay response. Students have up to 5000 characters to formulate their response.
- **Technology-Enhanced (TE)**
TE questions allow for a more engaging, interactive assessment. A wide variety of TE questions are present on the Forward Exam including:
 - Clock Input
 - Angle Draw
 - Short Input
 - Bar Graph
 - Number Line

- Coordinate Graph
- Line Plot
- List
- Drag and Drop
- Drop-Down List
- Pictograph using Drag and Paste
- Circle Graph
- Matching
- Highlighting Text

Accommodations and supports for students with disabilities and/or English language learners are built into the system so that the progress of students can be accurately measured.

What does this mean for my child?

The Forward Exam is a summative assessment that gauges your child's achievement in the content areas tested compared to other students in the state.

Along with local measures such as report cards, school-wide assessments, and other information about your child's progress in school, the results from the Forward Exam provide insight into how well your child is doing on a broad measure of achievement.

What are the test times?

The estimated time for test administration in each grade is approximately:

- 2 hours and 20 minutes for ELA,
 - 1 hour and 45 minutes for Mathematics,
 - 1 hour and 40 minutes for Science, and
 - 1 hour and 30 minutes for Social Studies.
- These are estimated times, for the purpose of scheduling, as the Forward Exam is not a timed test.